

**PLEASE CHECK WWW.MOLEX.COM FOR LATEST PART INFORMATION**

**Part Number:** [1510492401](#)  
**Status:** **Active**  
**Overview:** CP Wire-to-Board and Wire-to-Wire Connector Systems  
**Description:** CP-6.5 Receptacle Housing, 6.50mm Pitch, Dual Row, Polarized, Positive Lock, 4 Circuits, Blue

**Documents:**

[3D Model](#) [Packaging Specification PK-151049-0001-001 \(PDF\)](#)  
[Drawing \(PDF\)](#) [RoHS Certificate of Compliance \(PDF\)](#)  
[Product Specification PS-151048-0001-001 \(PDF\)](#)

**Agency Certification**

CSA LR19980  
 UL E29179

**General**

Product Family Crimp Housings  
 Series [151049](#)  
 Application Wire-to-Board  
 Comments See Product Specification for maximum current rating by circuit size and wire AWG  
 Overview [CP Wire-to-Board and Wire-to-Wire Connector Systems](#)  
 Product Name CP-6.5  
 UPC 889056065870

**Physical**

Circuits (maximum) 4  
 Color - Resin Blue  
 Flammability 94V-0  
 Gender Receptacle  
 Glow-Wire Compliant No  
 Keying to Mating Part Yes  
 Lock to Mating Part Yes  
 Material - Resin PBTP  
 Net Weight 1.856/g  
 Number of Rows 2  
 Packaging Type Bag  
 Panel Mount No  
 Pitch - Mating Interface 6.50mm  
 Pitch - Termination Interface 6.50mm  
 Polarized to Mating Part Yes  
 Temperature Range - Operating -40°C to +105°C

**Electrical**

Current - Maximum per Contact 10.0A

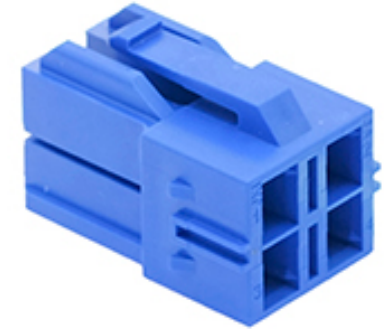
**Solder Process Data**

Lead-freeProcess Capability N/A

**Material Info**

**Reference - Drawing Numbers**

Packaging Specification PK-151049-0001-001  
 Product Specification PS-151048-0001-001  
 Sales Drawing SD-151049-0001-001



Series image - Reference only

**EU ELV**

**Not Relevant**

**EU RoHS**

**Compliant**

**REACH SVHC**

Not Contained Per - ED/30/2017 (7 July 2017)

**Halogen-Free**

**Status**

**Not Low-Halogen**

**Need more information on product environmental compliance?**

Email [productcompliance@molex.com](mailto:productcompliance@molex.com)  
 Please visit the [Contact Us](#) section for any non-product compliance questions.

China ROHS

ELV

RoHS Phthalates

Green Image

Not Relevant

Not Contained

**Search Parts in this Series**

[151049 Series](#)

**Mates With**

CP-6.5 Headers [151048-1401](#)

**Use With**

Female Crimp Terminal 16-22 AWG Wire [50597-8000](#) , Female Crimp Terminal 20-26 AWG Wire [50598-8000](#) , Crimp Terminal Retainer [51143-0105](#)

**PLEASE CHECK [WWW.MOLEX.COM](http://WWW.MOLEX.COM) FOR LATEST PART INFORMATION**